

# ONE ORTHODONTICS

YOUR ORTHODONTIST. **YOUR SMILE.**™

44 High Street, Cobham KT11 3EB  
+44 (0)1483 971698 | info@oneorthodontics.co.uk

## FOV & Resolution Options

### CONE BEAM CT SCAN (OP 3D PRO)

---

#### Scan Field of View (FOV)

FOV	Exact FOV	GENERAL RECOMMENDATIONS
5 x 5 cm	50 x 50 mm	Optimized for single site implants or localized diagnostics, for example 3rd molar extractions, impacted teeth, single TMJ assessment, endodontics.
6 x 8 cm	61 x 78 mm	Multiple implant placement using surgical guides, covers complete dental arch, optimized for one jaw.
8 x 8 cm	78 x 78 mm	Entire dentition, both mandible and maxilla as well as a portion of maxillary sinus.
8 x 15 cm	78 x 150 mm	Both mandible and maxilla including airway and upper cervical spine or the sinus, both TM joints.
13 x 15 cm	130 x 150 mm	Covers entire maxillofacial region, includes mandible and maxilla, up to the frontal sinus (see graphic of FOV)

#### Scan Resolution

	GENERAL RECOMMENDATIONS
Low Dose Technology™	Treatment follow up, children
Standard	Implants, 3rd molars, TMJ, impacted teeth, root resorption
High	Pathologies, alveolar bone defects, root fractures
Endo	Endodontic cases (periapical infections, root canals, fractures, etc.)

**50 x 50 mm FOV**



**Available resolutions:**



High resolution (125µm voxel size)



Standard resolution (200µm voxel size)



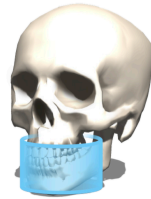
Low Dose Technology™ (LDT) resolution (280µm voxel size)

Program optimized for endodontic imaging:



Endo program (85µm voxel size)

**61 x 78 mm FOV**



**Available resolutions:**



High resolution (200µm voxel size)



Standard resolution (300µm voxel size)



Low Dose Technology™ (LDT) resolution (320µm voxel size)

**78 x 78 mm FOV**



**Available resolutions:**



High resolution (200µm voxel size)



Standard resolution (300µm voxel size)



Low Dose Technology™ (LDT) resolution (320µm voxel size)

**78 x 150 mm FOV**



**Available resolutions:**



High resolution (250µm voxel size)



Standard resolution (350µm voxel size)



Low Dose Technology™ (LDT) resolution (400µm voxel size)

**130 x 150 mm FOV (optional)**



**solutions:**

High resolution (320µm voxel size)



Standard resolution (380µm voxel size)



Low Dose Technology™ (LDT) resolution (420µm voxel size)